

MODERN URBAN TOWNHOME

# West Village

85



**THREE BEDROOM, FLEX & STUDY**

**1,650 SF**

PLUS 368 SF BACKYARD

PLUS 212 SF ROOFTOP TERRACE

## Greenwich Village

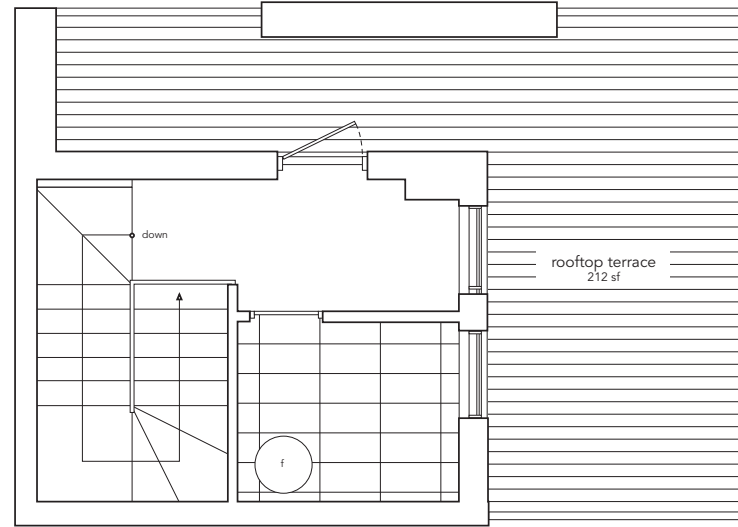
-TOWNS AT SHEPPARD WEST SUBWAY-

A trendy and quaint neighbourhood home to the historic Stonewall Inn and rows of brownstones found along beautifully tree lined streets. For entertainment, Christopher Street offers a lively collections of bars and restaurants accepting of everyone.

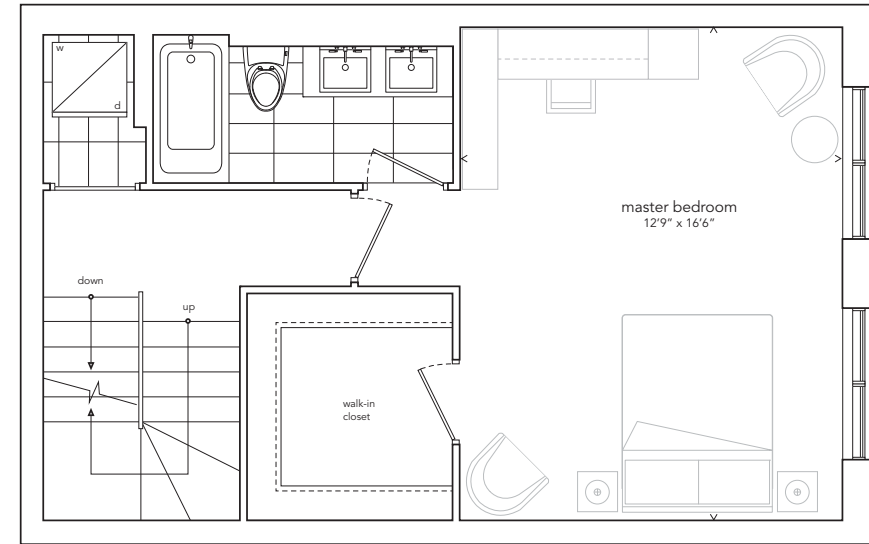
# West Village

**THREE BEDROOM, FLEX & STUDY**  
**1,650 SF PLUS 368 SF BACKYARD AND 212 SF ROOFTOP TERRACE**

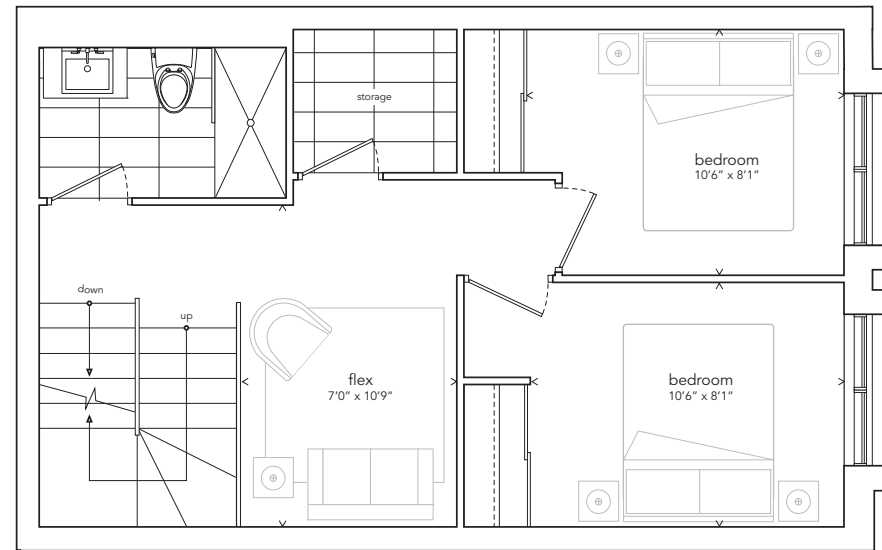
ROOFTOP TERRACE



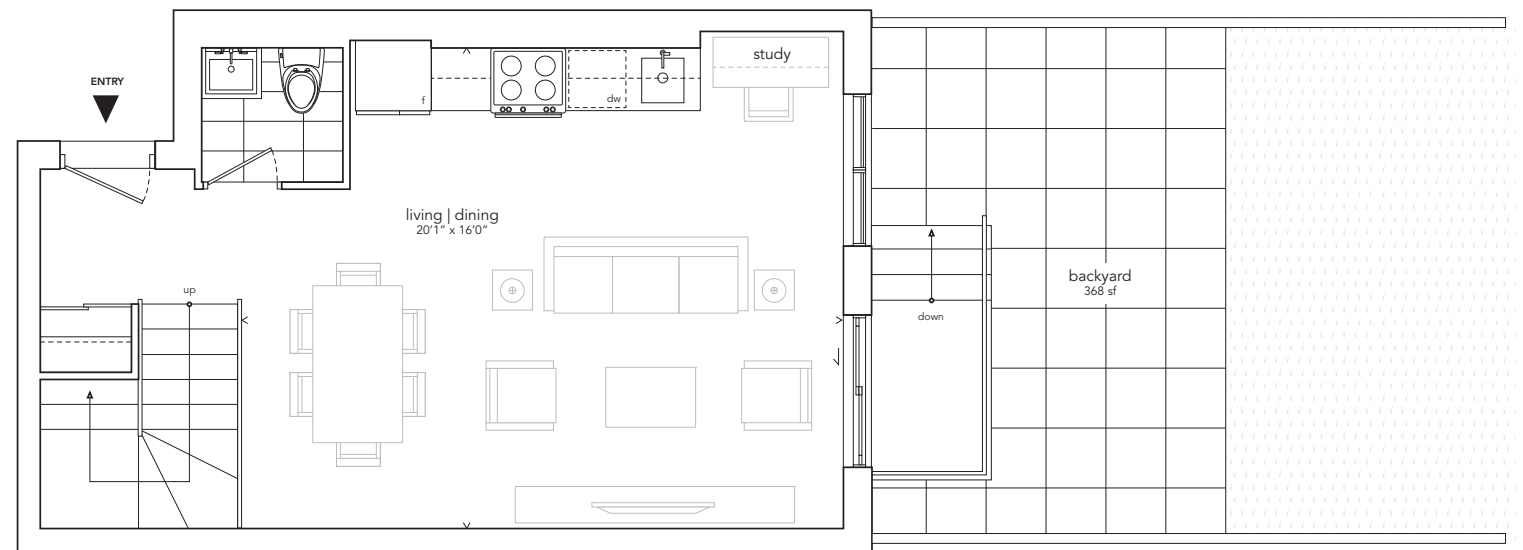
SECOND LEVEL



THIRD LEVEL

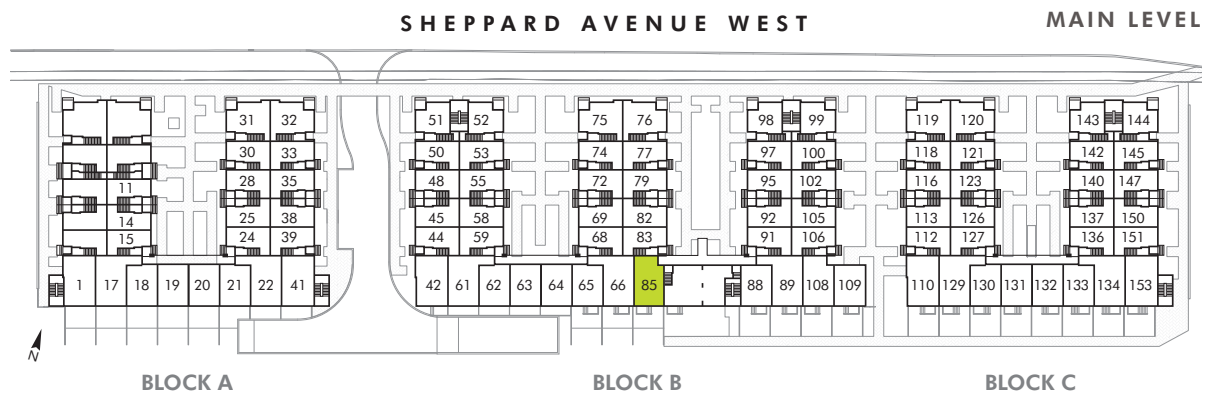


MAIN LEVEL



## Greenwich Village

- TOWNS AT SHEPPARD WEST SUBWAY -



All sizes, dimensions and specifications are subject to change without notice. This plan is not to scale and is subject to architectural review and revision. In order to comply with building site conditions and municipal, structural, vendor and/or architectural requirements, actual living areas may vary from floor area stated. Floor area has been measured and may vary in accordance with Bulletin #22 published by the Tarion Warranty Corporation. Window location, size and type may vary without notice. All flooring shown on marketing plans are approximate and may vary. Purchasers acknowledge that the dwelling units with terraces or balconies may contain an interior step up for access to such terraces or balconies. The balcony area finishing material and any dividers, where applicable, may vary from suite to suite based on design and material specifications. Balcony dimensions, configuration and location are estimates only and may not be exactly as shown. Furnishings are for display purposes only. Location of columns, size and type may vary without notice. E.&O.E. July 2019